



guestconnect

Connecting to MeritCare Wireless Internet

System Requirements

802.11b/g Wi-Fi compatible network adapter

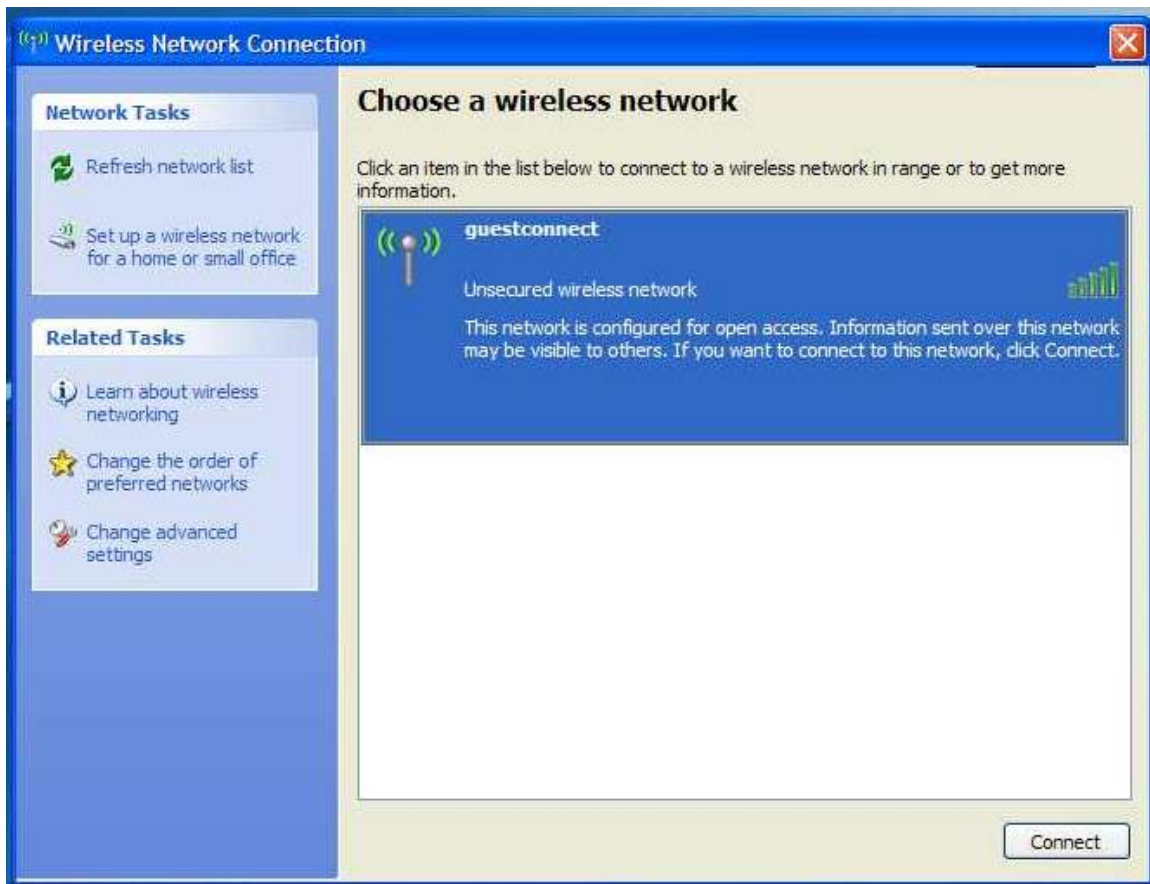
Windows 98 or higher preferred

Internet Browser

How to Connect

If your laptop has a wireless card in it, you may see a popup in the lower right-hand corner of your screen that says one or more wireless networks are available.

Click on that box and it will bring up a list of networks.



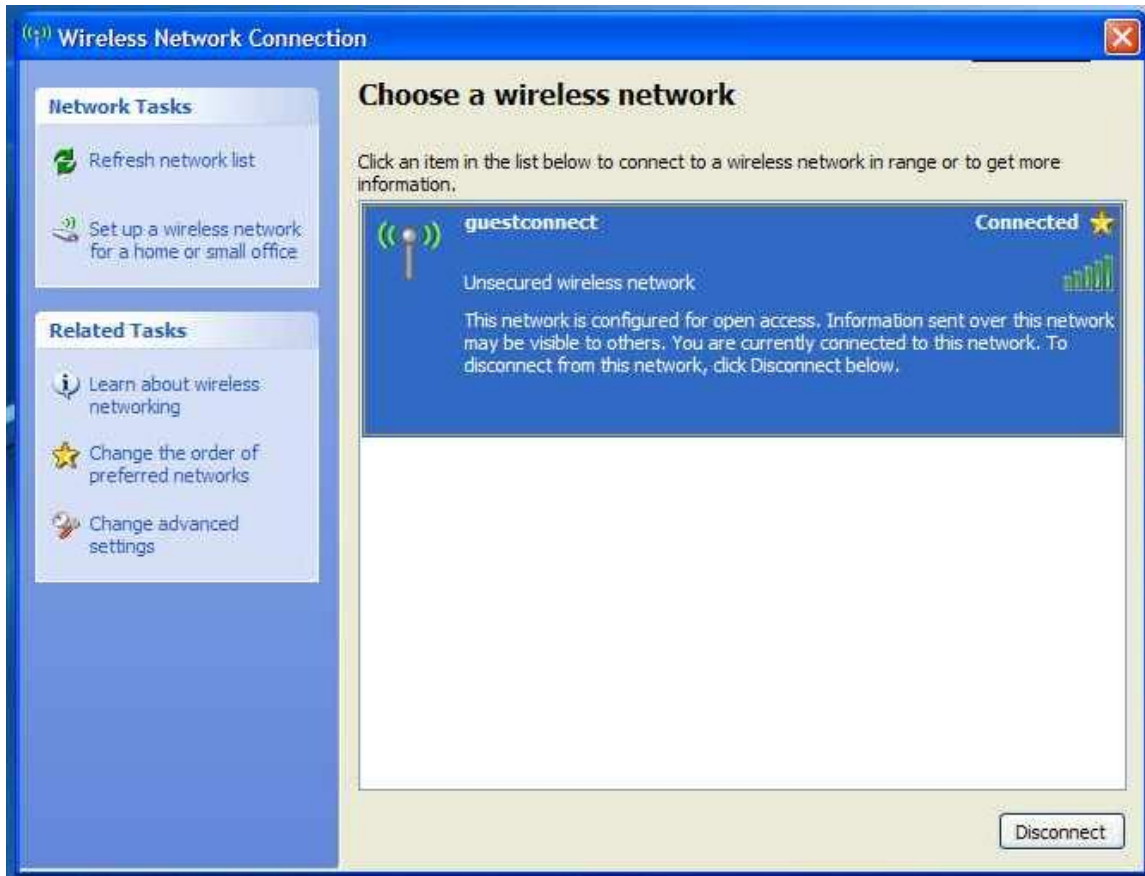
On the list shown, highlight the **guestconnect network** and click the connect button in the lower right-hand corner of the window.

You may get a warning about it being an unsecure network. Click “Connect Anyway”.
(Because it is a free internet service and you are allowed to connect directly no encryption of your wireless traffic is provided. This is the same as most hot spots you will encounter.)



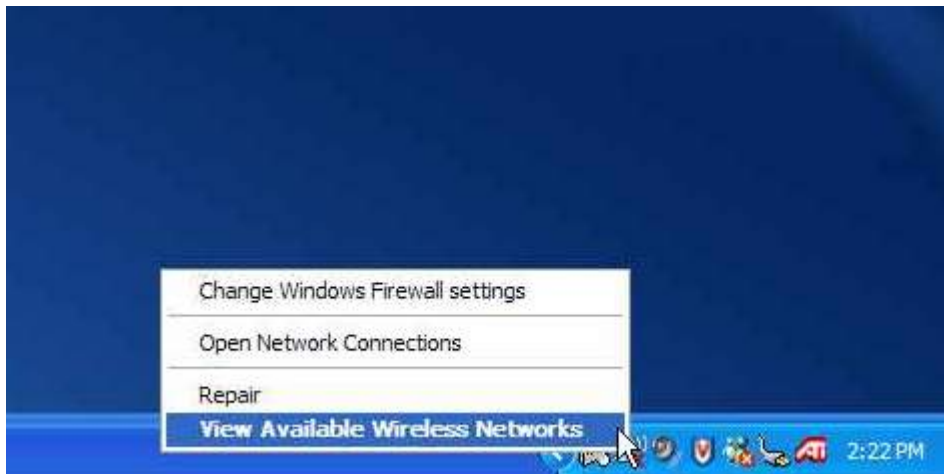
Once you have connected to the network the list will now show you as connected to guestconnect. You can close with window by clicking on the X in the upper right hand corner.

Now you may open your Internet browser and access the Internet freely.

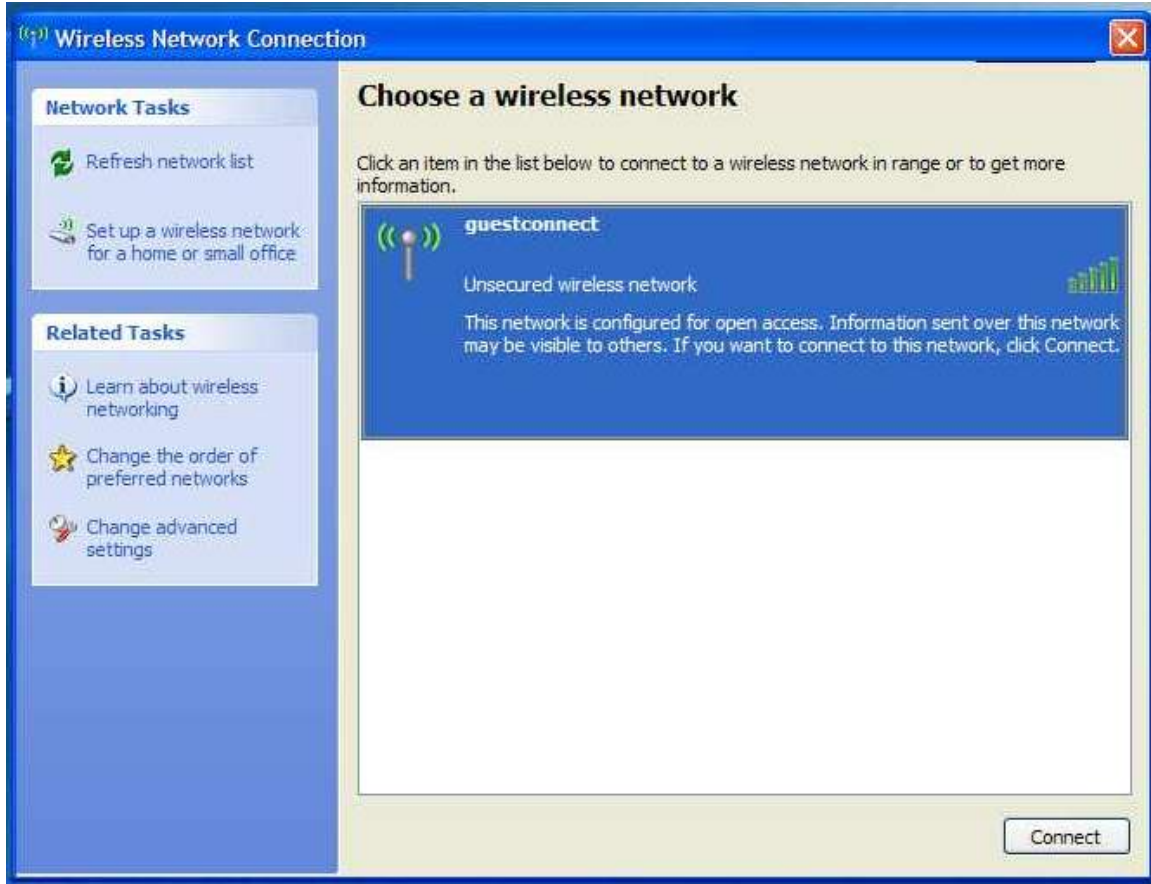


Troubleshooting Tips

If the "One or More Wireless Networks are available" box doesn't pop up, you can view the available wireless networks by right clicking on the System Tray icon for your wireless card. When the context sensitive popup menu appears choose "View Available Wireless Networks"



This should bring to a screen where you can choose the “guestconnect” wireless network and connect to it.



If the “guestconnect” wireless network does not show up in the list click on the Change Advanced Settings selection on the left hand of the window.

Fill in the information as shown below and click OK. This should create the entries to allow you to connect to “guestconnect”

Wireless network properties [?] [X]

Association | **Authentication** | Connection

Network name (SSID):

Wireless network key

This network requires a key for the following:

Network Authentication:

Data encryption:

Network key:

Confirm network key:

Key index (advanced):

The key is provided for me automatically

This is a computer-to-computer (ad hoc) network; wireless access points are not used

OK Cancel